



2025 SOLO EVENTS

SWANSEA EVENT PROGRAMMING CHANGE INDIVIDUAL AGES ON EACH DAY. NOW OFFERING CHAMPS IN EVERY AGE GROUP.

7-12 JULY

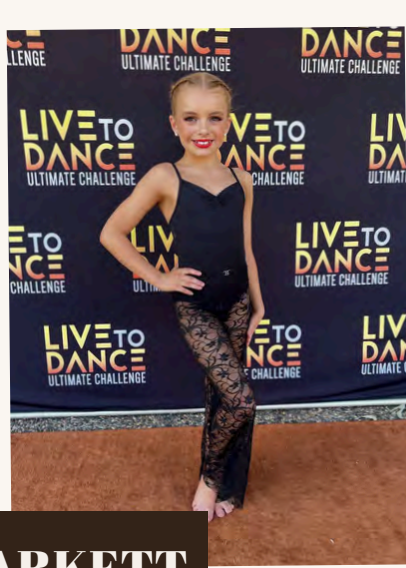
**FORSTER SOLO EVENT
GREAT LAKES COLLEGE
FORSTER CAMPUS
CLOSING 1/6**

27-5 SEPT/OCT

**SWANSEA SOLO EVENT
SWANSEA HIGH SCHOOL
CLOSING 31/8**

**COMPS-ONLINE OPEN NOW
1ST-3RD AWARDED IN EVERY SECTION**

1ST-3RD
AWARDED IN
ALL
SECTIONS



CASH
AWARDS

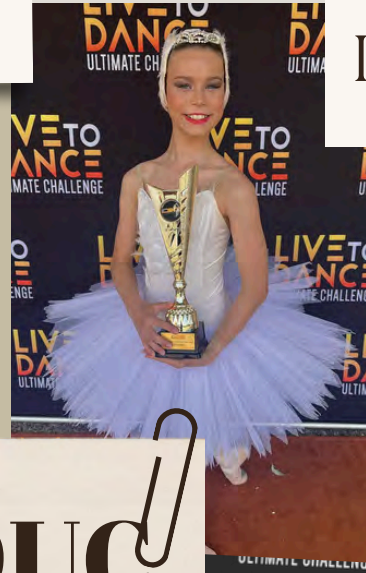
INDUSTRY
JUDGES



TARKETT

INDIVIDUAL AGES

MP4 ADJUDICATION
VIDEO



FRIENDLY

LTDUC
SOLO
COMPETITION

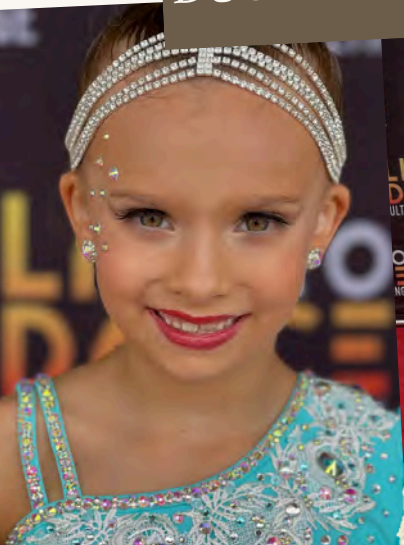
SOLO'S



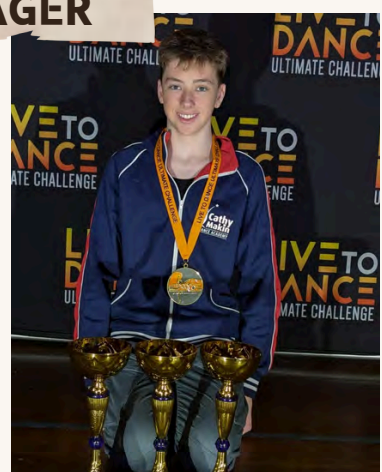
FREE
MUSIC
UPLOAD

DUO'S+TRIO'S

BACKSTAGE
MANAGER



DESIGNATED
CHANGING
SPACES
PROVIDED



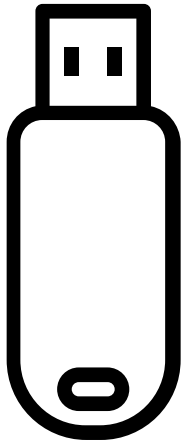
PROGRAM
BLOCKING



PLEASE NOTE CD'S WILL BE ACCEPTED AT LTDUC EVENTS

MUSIC

UPLOAD + COLLECTION DETAILS



x1

HAND IN
ALL MUSIC
ON ONE
USB

NOTE: NEW
DROP BOX
PROVIDED
EACH EVENT

OR

UPLOAD
ONLINE TO THE
DROP BOX
PROVIDED



remember to label
each track as per
instructions below

HOW TO LABEL YOUR TRACK

EACH TRACK MUST BE CLEARLY LABELLED WITH
SECTION NUMBER, COMPETITOR NUMBER,
COMPETITOR NAME AND STARTING CUE

E.G S1-C1-NAMEON

TO RENAME YOUR TRACK SIMPLY RIGHT CLICK +
SELECT THE RENAME OPTION



LIVE TO DANCE
ULTIMATE CHALLENGE

ENTRY FEES

ENTRY FEES

SOLO

20

IMPROVISATION

18

CHAMPIONSHIP

28

DUO/TRIO

35

ELECTRONIC PROGRAM

7

HOW TO ENTER

ENTER ONLINE

WWW.comps-online.com.au

See page 6 for full instructions

EMAIL ENTRY FORM

LTDUCentries@gmail.com

Enquiries: livetodanceultimatechallenge@gmail.com

OR Call: Sally 0407 977 760

NO ENTRIES WILL BE ACCEPTED AFTER CLOSING DATES TO ASSIST PROGRAM DISTRIBUTION

SOLO DUO + TRIO SECTIONS

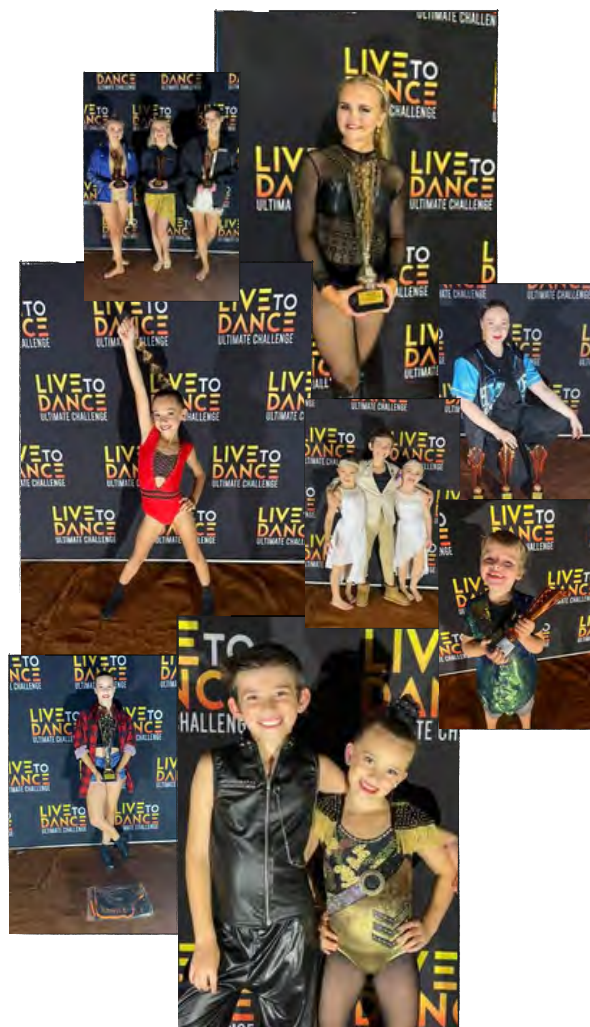
BABIES: YOU MAY ENTER MORE THAN ONE ROUTINE IN THESE SECTIONS. REPEATS ARE ALLOWED FOR CHAMPS.

SPECIALLY RESTRICTED: FOR COMPETITORS WHO HAVE NOT WON A SPECIALLY RESTRICTED SECTION OF THAT STYLE.

RESTRICTED: FOR COMPETITORS WHO HAVE WON IN A SPECIALLY RESTRICTED SECTION OF THAT STYLE.

OPEN: FOR COMPETITORS WHO HAVE WON IN A RESTRICTED SECTION IN THAT STYLE.

NOTE: WHEN A PERFORMER MOVES UP AN AGE GROUP THEY DO NOT GO REVERT BACK TO SPECIALLY RESTRICTED BUT STAY IN THE DIVISION THEY ARE CURRENTLY



**LIVE TO
DANCE**
ULTIMATE CHALLENGE

ENTER ONLINE

Go to : www.comps-online.com.au

- Click the **LOGIN** button next to Live To Dance Ultimate Challenge -CENTRAL COAST/ FORSTER/ SWANSEA.
- Select **Click Here to Create a New Account**. Once you have filled in your details, you will be emailed a confirmation document. Click on the link in this email to activate your account. Then you can simply log back in and follow the 5 steps to complete all of your entries. **If you already have an account with Comps-Online, skip this step and just login.**
- Click on **Step 2** – to enter your **Competitor's Names**
- Click on **Step 3** – to select your required **Sections**.
- Programs can be purchased in **Step 4 – Programs/Other**.
- Proceed to the **Payments Page – Step 5** to review your entry summary and click to accept the terms and conditions of the competition (compulsory). Select Pay Pal as your payment option and once you click submit, you will be transferred directly to **Pay Pal** to make your credit card payment
- An invoice will be emailed to you confirming that your registration has been received. **Please Note: If you do not receive an invoice within 1 hour in your Inbox or in your Junk Mail folder, please contact Comps-Online Technical Support on (03) 9841 5940.**

All of your information will be securely stored on the Comps-Online website for future competitions.

Please note that registrations for this competition can only be accepted once full payment has been received.



ENQUIRIES: livetodanceultimatechallenge@gmail.com OR mobile 0407977760

RULES and CONDITIONS OF ENTRY-Including Privacy Policy

Live to Dance Ultimate Challenge respects the privacy of all our users and we are committed to safeguarding the personal information which you provide us. Live to Dance Ultimate Challenge uses Comps-Online for their online registration.

To protect your privacy, Comps-Online only collect information necessary to process your registration and purchases. Please read their privacy policy carefully before using the Comps-Online website. This information is collected to enable Comps-Online to process your registration and purchases and to enable users to retrieve lost passwords. Comps-Online will only pass on necessary information provided by you, to us for administration and scheduling purposes.

After you complete your online registration, within a few minutes you will receive an email confirmation from Pay Pal and a Comps-Online invoice containing your order details.

The organisers are not responsible for incorrect entries. Once entries have been accepted, no refunds will be given unless the section is cancelled. Entries will not be added to the schedule until full payment has been received. The organisers reserve the right to combine sections if deemed necessary.

If you have placed an order on merchandise (e.g. Printed program) we will send your goods via Australia Post once the event has been finalised. If you wish to query a delivery, please contact us at livetodanceultimatechallenge@gmail.com

Age Forster Solo Event - 7, July 2025
Swansea Solo Event 27, September 2025. Duos/Trios age is taken from the eldest performer. **Repeats will be allowed**

SOLO Music - we will be taking music on USB or via DROPBOX upload. EACH TRACK must be clearly labelled with the section number, competitor number competitor name and where they start their routine (on or off) E.g S1-C1 NAMEON. CDs will still be accepted and should be clearly labelled with the section number, competitor name, and competitor number.

NOTE - A new drop box link will be provided each event

Duo's and Trios have a **time limit** of 4 min. Solo's have a time limit of 3 min.

Championships all competitors entered into championship sections must enter and compete in the section and improvisation of that genre to quality. LTDUC does not take responsibility for notifying those competitors not entered in the correct qualifying sections.

Injuries No responsibility will be accepted by the organisers of any injury, accident or loss of any property occurred by all persons and competitors attending the Dance Challenge

Improvisations Any plain class leotard or dance attire, including 2 piece or dance pants. No glitz. Demi-Character requires competitors to use at least two props which they may view backstage at the beginning of the section. The Mystery Improvisation allows competitors to dance any style they feel suits the music played. Competitors are encouraged to take multiple shoes side stage with them, should they need to change.

No Resin is to be used. Harlequin floor is provided and resin will cause the floor to become slippery.

No Changing inside the venue, please use the changing areas provided. Under the NSW Child Protection Act, all dressing and undressing is to be done in the designated areas.

Please use **tap covers** or remove tap shoes within the Venue.

Venue to be cleared for cleaning at the end of each session - weather permitting. Any competitor using feathers, glitter, hay or any other loose materials within their performance will need to advise backstage and sound desk prior to section and will need to supply one person to assist with sweeping the stage- **STRICTLY NO POWDER TO BE USED** as this causes the floor to become slippery and is a safety hazard to other performers.

Prompting back-stage will only be allowed in the 3/u, 4/u & 5/u Any-style sections and championships, the 6/u troupe sections and the inclusive sections.

LTDUC has the right to **combine sections** where necessary.

No teachers, mothers/helpers side-stage except in babies section or when props are required. However you may accompany your competitor/s to the **backstage** holding area
Arrival time

Competitors should **arrive** at least 30 minutes before estimated start time of Section

No personal video - or photography will be permitted inside the venue. A professional videographer and photographer are available on the day. You must order your photos before your competitor performs. All items are filmed and are available for purchase after the event.

Any **protests** must be lodged at the back table in writing no later than 15 minutes after the end of the section. All protests must be accompanied by a \$100.00 fee. Protests will be dealt with by the Committee. The \$100.00 fee will be forfeited if the protest is dismissed.

Teachers pass must be shown upon entry. These passes are not transferrable.

Postponed event due to unforeseen circumstances. In the event of conditions beyond our control (COVID -19) we will notify all competitors of the decision to postpone. If competitors are unable to attend the new date they are able to transfer their entries to another LTDUC event.

Any persons who approach the adjudicator during the festival may deem their child or studio disqualified. The Adjudicator's decision is final

FORSTER

EVENT

PROPOSED DATES





\$150 CASH

**6/U ULTIMATE PERFORMER
8/U ULTIMATE PERFORMER
10/U ULTIMATE PERFORMER**

\$150 CASH

**12/U ULTIMATE PERFORMER
14/U ULTIMATE PERFORMER
15/O ULTIMATE PERFORMER**



MAJOR AWARDS



\$100 CASH

**6/U SR+R RISING STAR
8/U SR+R RISING STAR
10/U SR+R RISING STAR**

\$100 CASH

**12/U SR+R RISING STAR
14/U SR+R RISING STAR
15/O SR+R RISING STAR**



**Junior Highest Scoring Improvisation (12/u)
\$100 CASH
Senior Highest Scoring Improvisation (13/o)
\$100 CASH
Novice Championship 1st place recipients
Dance Bag
Open Championship 1st place recipients
\$50 CASH**

The above awards will be presented at our Forster Competition

FORSTER ENTRIES

ANY-STYLE MULTIPLE ENTRIES ACCEPTED

ANY-STYLE CHAMPIONSHIP MULTIPLE ENTRIES ACCEPTED

3/u	4/u	5/u	6/u	3/u	4/u	5/u	6/u
-----	-----	-----	-----	-----	-----	-----	-----

SPECIALLY RESTRICTED

JAZZ	BROADWAY JAZZ	HIP HOP	LYRICAL	CONTEMPORARY	CLASSICAL	DEMI CHARACTER
5/u	5/u	5/u	5/u	5/u	5/u	5/u
6/u	6/u	6/u	6/u	6/u	6/u	6/u
8/u	8/u	8/u	8/u	8/u	8/u	8/u
10/u	10/u	10/u	10/u	10/u	10/u	10/u
12/u	12/u	12/u	12/u	12/u	12/u	12/u
14/u	14/u	14/u	14/u	14/u	14/u	14/u
15/o	15/o	15/o	15/o	15/o	15/o	15/o

LTDUC HAS THE RIGHT TO COMBINE SECTIONS WHERE NECESSARY

SLOW TAP	WALTZ TAP	SPEED TAP	VARIETY*	MUSICAL THEATRE*	STUDENT CHOREOGRAPHY*	ACRO
5/u	5/u	5/u	5/u	5/u	5/u	5/u
6/u	6/u	6/u	6/u	6/u	6/u	6/u
8/u	8/u	8/u	8/u	8/u	8/u	8/u
10/u	10/u	10/u	10/u	10/u	10/u	10/u
12/u	12/u	12/u	12/u	12/u	12/u	12/u
14/u	14/u	14/u	14/u	14/u	14/u	14/u
15/o	15/o	15/o	15/o	15/o	15/o	15/o

*Multiple entries accepted

FORSTER ENTRIES

RESTRICTED

JAZZ	BROADWAY JAZZ	HIP HOP	LYRICAL	CONTEMPORARY	CLASSICAL	DEMI CHARACTER
5/u	5/u	5/u	5/u	5/u	5/u	5/u
6/u	6/u	6/u	6/u	6/u	6/u	6/u
8/u	8/u	8/u	8/u	8/u	8/u	8/u
10/u	10/u	10/u	10/u	10/u	10/u	10/u
12/u	12/u	12/u	12/u	12/u	12/u	12/u
14/u	14/u	14/u	14/u	14/u	14/u	14/u
15/o	15/o	15/o	15/o	15/o	15/o	15/o

LTDUC HAS THE RIGHT TO COMBINE SECTIONS WHERE NECESSARY

SLOW TAP	WALTZ TAP	SPEED TAP	VARIETY*	MUSICAL THEATRE*
5/u	5/u	5/u	5/u	5/u
6/u	6/u	6/u	6/u	6/u
8/u	8/u	8/u	8/u	8/u
10/u	10/u	10/u	10/u	10/u
12/u	12/u	12/u	12/u	12/u
14/u	14/u	14/u	14/u	14/u
15/o	15/o	15/o	15/o	15/o

*Multiple entries accepted

FORSTER ENTRIES

OPEN SECTIONS

JAZZ	BROADWAY JAZZ	HIP HOP	LYRICAL	CONTEMPORARY	CLASSICAL	DEMI CHARACTER	CLASSICAL VARIATION
5/u	5/u	5/u	5/u	5/u	5/u	5/u	8/u
6/u	6/u	6/u	6/u	6/u	6/u	6/u	10/u
8/u	8/u	8/u	8/u	8/u	8/u	8/u	12/u
10/u	10/u	10/u	10/u	10/u	10/u	10/u	14/u
12/u	12/u	12/u	12/u	12/u	12/u	12/u	
14/u	14/u	14/u	14/u	14/u	14/u	14/u	
16/u	16/u	15/o	16/u	16/u	16/u	15/o	
17/o	17/o		17/o	17/o	17/o		

LTDUC HAS THE RIGHT TO COMBINE SECTIONS WHERE NECESSARY

SLOW TAP	WALTZ TAP	SPEED TAP	VARIETY*	MUSICAL THEATRE*	STUDENT CHOREOGRAPHY*	ACRO	
5/u	5/u	5/u	5/u	5/u	5/u	5/u	
6/u	6/u	6/u	6/u	6/u	6/u	6/u	
8/u	8/u	8/u	8/u	8/u	8/u	8/u	
10/u	10/u	10/u	10/u	10/u	10/u	10/u	
12/u	12/u	12/u	12/u	12/u	12/u	12/u	
14/u	14/u	14/u	14/u	14/u	14/u	14/u	
15/o	15/o	15/o	15/o	15/o	15/o	15/o	

*Multiple entries accepted

FORSTER ENTRIES

IMPROVISATION GENRES

NOVICE + OPEN DIVISIONS

JAZZ	MODERN LYRICAL	CONTEMPORARY	CLASSICAL	DEMI CHARACTER	TAP	MYSTERY	HIP-HOP
5/u	5/u	5/u	5/u	5/u	5/u	5/u	5/u
6/U	6/U	6/U	6/U	6/U	6/U	6/U	6/U
8/U	8/U	8/U	8/U	8/U	8/U	8/U	8/U
10/U	10/U	10/U	10/U	10/U	10/U	10/U	10/U
12/U	12/U	12/U	12/U	12/U	12/U	12/U	12/U
14/U	14/U	14/U	14/U	14/U	14/U	14/U	14/U
15/O	15/O	15/O	15/O	15/O	15/O	15/O	15/O

IMPROVISATION CHAMPIONSHIP

NOVICE + OPEN DIVISIONS

6/U	8/U	10/U	12/U	14/U	15/O
-----	-----	------	------	------	------

To qualify, competitors must enter and compete in two improvisation genres. The improvisation championship will consist of one jazz style improvisation and one modern improvisation. Scores will be combined to determine award winners.

LIVE TO DANCE ULTIMATE CHALLENGE RESERVES THE RIGHT TO COMBINE SECTIONS IF DEEMED NECESSARY

CHAMPIONSHIP

NOVICE + OPEN DIVISIONS

JAZZ	MODERN LYRICAL	CONTEMPORARY	CLASSICAL	DEMI CHARACTER	TAP	MYSTERY	HIP-HOP
5/u	5/u	5/u	5/u	5/u	5/u	5/u	5/u
6/U	6/U	6/U	6/U	6/U	6/U	6/U	6/U
8/U	8/U	8/U	8/U	8/U	8/U	8/U	8/U
10/U	10/U	10/U	10/U		10/U	10/U	10/U
12/U	12/U	12/U	12/U	12/U	12/U	12/U	12/U
14/U	14/U	14/U	14/U	14/U	14/U	14/U	14/U
15/O	15/O	15/O	15/O	15/O	15/O	15/O	15/O

CHAMPIONSHIP SECTIONS

We offer both **NOVICE** and **OPEN** Championship sections. Both require you to enter the improvisation section corresponding with the style of dance you have entered to qualify and specially restricted, restricted or open section of that style.

Novice Championship

Novice Championships are for competitors who have not won first place in a novice championship or placed in an open championship for the respective genre. To qualify you must have danced in a Specially Restricted, Restricted or Open section in that category and an improvisation section of that style. In the Novice Championship section you will be required to perform one routine only. **Repeats are allowed.**

Open Championship

To qualify you must have danced in a specially restricted, restricted or open section for that category and also entered the improvisation section for that Style.

For example: to qualify for a Jazz Championship you must have entered the a Jazz section and Jazz Improvisation for your age group. **Repeats Allowed.**

In the Open Championship section you are required to perform the following (Swansea event only)

Jazz One improvisation followed by one Jazz routine. *no improvisation in OPEN Championship section for 10/u. **Modern/Contemporary** One

Improvisation followed by a Contemporary/ Modern routine. *no improvisation in OPEN championship section 10/u

Classical One Classical & one Demi-Character routine required. *one dance only for 10/u OPEN Championship.

Tap Two varying tap routines for example: Slow and Speed. *one tap routine only for 10/u OPEN Championship.

***Competitors aged 10/u will only be required to perform one dance only in the Novice and Open Championship. Repeats are allowed and competitors may choose to dance either a classical or Demi in Classical championships for this age group.**

INCLUSIVE SECTION FOR DANCERS WITH INDIVIDUAL NEEDS

Multiple entries accepted

12/U	13/O
------	------

Trophies and prizes awarded to all competitors in the inclusive section. **This section is free to enter.**

DUOS/TRIOS - ANY STYLE Multiple entries accepted

6/u	8/u	10/u	12/u	14/u	15/o
-----	-----	------	------	------	------

Age is calculated from eldest competitor within the duo or trio, please refer to rules and conditions of entry

LIVE TO DANCE ULTIMATE CHALLENGE RESERVES THE RIGHT TO COMBINE SECTIONS IF DEEMED NECESSARY.



SWANSEA

EVENT

PROPOSED DATES

27 SEPT 4/5/6 YEARS INCLUSIVE SECTIONS 14/U	28 SEPT 7/8 YEARS	29 SEPT 9 YEARS	30 SEPT 10 YEARS	1 OCT 11 YEARS
2 OCT 12 YEARS	3 OCT 13 YEARS	4 OCT 14 YEARS	5 OCT 15/16/17 YEARS INCLUSIVE SECTIONS 18/U OR 19+	

**SWANSEA EVENT WILL OFFER
INDIVIDUAL AGE GROUPS IN
SECTIONS, IMPROS AND
CHAMPIONSHIPS.**





\$150 CASH

**6/U ULTIMATE PERFORMER
7/U ULTIMATE PERFORMER
8/U ULTIMATE PERFORMER
9/U ULTIMATE PERFORMER
10/U ULTIMATE PERFORMER**

\$150 CASH

**11/U ULTIMATE PERFORMER
12/U ULTIMATE PERFORMER
13/U ULTIMATE PERFORMER
14/U ULTIMATE PERFORMER
15/O ULTIMATE PERFORMER**



MAJOR AWARDS



\$100 CASH

**6/U SR+R RISING STAR
7/U SR+R RISING STAR
8/U SR+R RISING STAR
9/U SR+R RISING STAR
10/U SR+R RISING STAR**

\$100 CASH

**11/U SR+R RISING STAR
12/U SR+R RISING STAR
13/U SR+R RISING STAR
14/U SR+R RISING STAR
15/O SR+R RISING STAR**



**Junior Highest Scoring Improvisation (12/u)
\$100 CASH
Senior Highest Scoring Improvisation (13/o)
\$100 CASH
Novice Championship 1st place recipients
\$50 VOUCHER
Open Championship 1st place recipients
\$50 CASH**

The above awards will be presented at our Swansea Competitions

SWANSEA ENTRIES

ANY-STYLE
MULTIPLE ENTRIES ACCEPTED

ANY-STYLE CHAMPIONSHIP
MULTIPLE ENTRIES ACCEPTED

3/u	4/u	5/u	6/u	3/u	4/u	5/u	6/u
-----	-----	-----	-----	-----	-----	-----	-----

SPECIALLY RESTRICTED

JAZZ	BROADWAY JAZZ	HIP HOP	LYRICAL	CONTEMPORARY	CLASSICAL	DEMI CHARACTER
5/u	5/u	5/u	5/u	5/u	5/u	5/u
6/u	6/u	6/u	6/u	6/u	6/u	6/u
7/u	7/u	7/u	7/u	7/u	7/u	7/u
8/u	8/u	8/u	8/u	8/u	8/u	8/u
9/u	9/u	9/u	9/u	9/u	9/u	9/u
10/u	10/u	10/u	10/u	10/u	10/u	10/u
11/u	11/u	11/u	11/u	11/u	11/u	11/u
12/u	12/u	12/u	12/u	12/u	12/u	12/u
13/u	13/u	13/u	13/u	13/u	13/u	13/u
14/u	14/u	14/u	14/u	14/u	14/u	14/u
15/o	15/o	15/o	15/o	15/o	15/o	15/o
INCLUSIVE 14/U 18/U OR 19+		INCLUSIVE 14/U 18/U OR 19+	INCLUSIVE 14/U 18/U OR 19+	INCLUSIVE 14/U 18/U OR 19+		

LTDUC HAS THE RIGHT TO COMBINE SECTIONS WHERE NECESSARY

SLOW TAP	WALTZ TAP	SPEED TAP	VARIETY*	MUSICAL THEATRE*	STUDENT CHOREOGRAPHY*	ACRO
5/u	5/u	5/u	5/u	5/u	5/u	5/u
6/u	6/u	6/u	6/u	6/u	6/u	6/u
7/u	7/u	7/u	7/u	7/u	7/u	7/u
8/u	8/u	8/u	8/u	8/u	8/u	8/u
9/u	9/u	9/u	9/u	9/u	9/u	9/u
10/u	10/u	10/u	10/u	10/u	10/u	10/u
11/u	11/u	11/u	11/u	11/u	11/u	11/u
12/u	12/u	12/u	12/u	12/u	12/u	12/u
13/u	13/u	13/u	13/u	13/u	13/u	13/u
14/u	14/u	14/u	14/u	14/u	14/u	14/u
15/o	15/o	15/o	15/o	15/o	15/o	15/o
					INCLUSIVE 18/U OR 19+	

*Multiple entries accepted

SWANSEA ENTRIES

RESTRICTED

JAZZ	BROADWAY JAZZ	HIP HOP	LYRICAL	CONTEMPORARY	CLASSICAL	DEMI CHARACTER
5/u	5/u	5/u	5/u	5/u	5/u	5/u
6/u	6/u	6/u	6/u	6/u	6/u	6/u
7/u	7/u	7/u	7/u	7/u	7/u	7/u
8/u	8/u	8/u	8/u	8/u	8/u	8/u
9/u	9/u	9/u	9/u	9/u	9/u	9/u
10/u	10/u	10/u	10/u	10/u	10/u	10/u
11/u	11/u	11/u	11/u	11/u	11/u	11/u
12/u	12/u	12/u	12/u	12/u	12/u	12/u
13/u	13/u	13/u	13/u	13/u	13/u	13/u
14/u	14/u	14/u	14/u	14/u	14/u	14/u
15/o	15/o	15/o	15/o	15/o	15/o	15/o

LTDUC HAS THE RIGHT TO COMBINE SECTIONS WHERE NECESSARY

SLOW TAP	WALTZ TAP	SPEED TAP	VARIETY*	MUSICAL THEATRE*
5/u	5/u	5/u	5/u	5/u
6/u	6/u	6/u	6/u	6/u
7/u	7/u	7/u	7/u	7/u
8/u	8/u	8/u	8/u	8/u
9/u	9/u	9/u	9/u	9/u
10/u	10/u	10/u	10/u	10/u
11/u	11/u	11/u	11/u	11/u
12/u	12/u	12/u	12/u	12/u
13/u	13/u	13/u	13/u	13/u
14/u	14/u	14/u	14/u	14/u
15/o	15/o	15/o	15/o	15/o

*Multiple entries accepted

SWANSEA ENTRIES

OPEN SECTIONS

JAZZ	BROADWAY JAZZ	HIP HOP	LYRICAL	CONTEMPORARY	CLASSICAL	DEMI CHARACTER	CLASSICAL VARIATION
5/u	5/u	5/u	5/u	5/u	5/u	5/u	8/u
6/u	6/u	6/u	6/u	6/u	6/u	6/u	10/u
7/u	7/u	7/u	7/u	7/u	7/u	7/u	11/u
8/u	8/u	8/u	8/u	8/u	8/u	8/u	12/u
9/u	9/u	9/u	9/u	9/u	9/u	9/u	13/u
10/u	10/u	10/u	10/u	10/u	10/u	10/u	14/u
11/u	11/u	11/u	11/u	11/u	11/u	11/u	15/o
12/u	12/u	12/u	12/u	12/u	12/u	12/u	
13/u	13/u	13/u	13/u	13/u	13/u	13/u	
14/u	14/u	14/u	14/u	14/u	14/u	14/u	
16/u	16/u	15/o	16/u	16/u	16/u	15/o	
17/o	17/o		17/o	17/o	17/o		

LTDUC HAS THE RIGHT TO COMBINE SECTIONS WHERE NECESSARY

SLOW TAP	WALTZ TAP	SPEED TAP	VARIETY*	MUSICAL THEATRE*	STUDENT CHOREOGRAPHY*	ACRO	
5/u	5/u	5/u	5/u	5/u	5/u	5/u	
6/u	6/u	6/u	6/u	6/u	6/u	6/u	
7/u	7/u	7/u	7/u	7/u	7/u	7/u	
8/u	8/u	8/u	8/u	8/u	8/u	8/u	
9/u	9/u	9/u	9/u	9/u	9/u	9/u	
10/u	10/u	10/u	10/u	10/u	10/u	10/u	
11/u	11/u	11/u	11/u	11/u	11/u	11/u	
12/u	12/u	12/u	12/u	12/u	12/u	12/u	
13/u	13/u	13/u	13/u	13/u	13/u	13/u	
14/u	14/u	14/u	14/u	14/u	14/u	14/u	
15/o	15/o	15/o	15/o	15/o	15/o	15/o	

*Multiple entries accepted

SWANSEA ENTRIES

IMPROVISATION GENRES

NOVICE + OPEN DIVISIONS

JAZZ	MODERN LYRICAL	CONTEMPORARY	CLASSICAL	DEMI CHARACTER	TAP	MYSTERY	HIP-HOP
5/u	5/u	5/u	5/u	5/u	5/u	5/u	5/u
6/U	6/U	6/U	6/U	6/U	6/U	6/U	6/U
7/U	7/U	7/U	7/U	7/U	7/U	7/U	7/U
8/U	8/U	8/U	8/U	8/U	8/U	8/U	8/U
9/U	9/U	9/U	9/U	9/U	9/U	9/U	9/U
10/U	10/U	10/U	10/U	10/U	10/U	10/U	10/U
11/U	11/U	11/U	11/U	11/U	11/U	11/U	11/U
12/U	12/U	12/U	12/U	12/U	12/U	12/U	12/U
13/U	13/U	13/U	13/U	13/U	13/U	13/U	13/U
14/U	14/U	14/U	14/U	14/U	14/U	14/U	14/U
15/O	15/O	15/O	15/O	15/O	15/O	15/O	15/O
INCLUSIVE 14/U 18/U OR 19+	INCLUSIVE 14/U 18/U OR 19+	INCLUSIVE 14/U 18/U OR 19+				INCLUSIVE 14/U 18/U OR 19+	INCLUSIVE 14/U 18/U OR 19+

IMPROVISATION CHAMPIONSHIP

NOVICE + OPEN DIVISIONS

6/U	8/U	10/U	12/U	14/U	15/O	INCLUSIVE 14/U 18/U OR 19+
-----	-----	------	------	------	------	-------------------------------

To qualify, competitors must enter and compete in two improvisation genres. The improvisation championship will consist of one jazz style improvisation and one modern improvisation. Scores will be combined to determine award winners.

LIVE TO DANCE ULTIMATE CHALLENGE RESERVES THE RIGHT TO COMBINE SECTIONS IF DEEMED NECESSARY

CHAMPIONSHIP

NOVICE + OPEN DIVISIONS

JAZZ	MODERN LYRICAL	CONTEMPORARY	CLASSICAL	DEMI CHARACTER	TAP	MYSTERY	HIP-HOP
5/u	5/u	5/u	5/u	5/u	5/u	5/u	5/u
6/U	6/U	6/U	6/U	6/U	6/U	6/U	6/U
7/U	7/U	7/U	7/U	7/U	7/U	7/U	7/U
8/U	8/U	8/U	8/U	8/U	8/U	8/U	8/U
9/U	9/U	9/U	9/U	9/U	9/U	9/U	9/U
10/U	10/U	10/U	10/U	10/U	10/U	10/U	10/U
11/U	11/U	11/U	11/U	11/U	11/U	11/U	11/U
12/U	12/U	12/U	12/U	12/U	12/U	12/U	12/U
13/U	13/U	13/U	13/U	13/U	13/U	13/U	13/U
14/U	14/U	14/U	14/U	14/U	14/U	14/U	14/U
15/O	15/O	15/O	15/O	15/O	15/O	15/O	15/O
				ANY-STYLE	INCLUSIVE 14/U, 18/U,19+		

We offer both **NOVICE** and **OPEN** Championship sections. Both require you to enter the improvisation section corresponding with the style of dance you have entered to qualify and specially restricted, restricted or open section of that style.

Novice Championship

Novice Championships are for competitors who have not won first place in a novice championship or placed in an open championship for the respective genre. To qualify you must have danced in a Specially Restricted, Restricted or Open section in that category and an improvisation section of that style. In the Novice Championship section you will be required to perform one routine only. **Repeats are allowed.**

Open Championship

To qualify you must have danced in a specially restricted, restricted or open section for that category and also entered the improvisation section for that Style.

For example: to qualify for a Jazz Championship you must have entered the a Jazz section and Jazz Improvisation for your age group. **Repeats Allowed.**

In the Open Championship section you are required to perform the following (Swansea event only)

Jazz One improvisation followed by one Jazz routine. *no improvisation in OPEN Championship section for 10/u. **Modern/Contemporary** One

Improvisation followed by a Contemporary/ Modern routine. *no improvisation in OPEN championship section 10/u

Classical One Classical & one Demi-Character routine required. *one dance only for 10/u OPEN Championship.

Tap Two varying tap routines for example: Slow and Speed. *one tap routine only for 10/u OPEN Championship.

*Competitors aged 10/u will only be required to perform one dance only in the Novice and Open Championship. Repeats are allowed and competitors may choose to dance either a classical or Demi in Classical championships for this age group.

LIVE TO DANCE ULTIMATE CHALLENGE RESERVES THE RIGHT TO COMBINE SECTIONS IF DEEMED NECESSARY

INCLUSIVE SECTIONS

SEE ABOVE ENTRY TABLES FOR A RANGE OF INCLUSIVE SECTIONS.

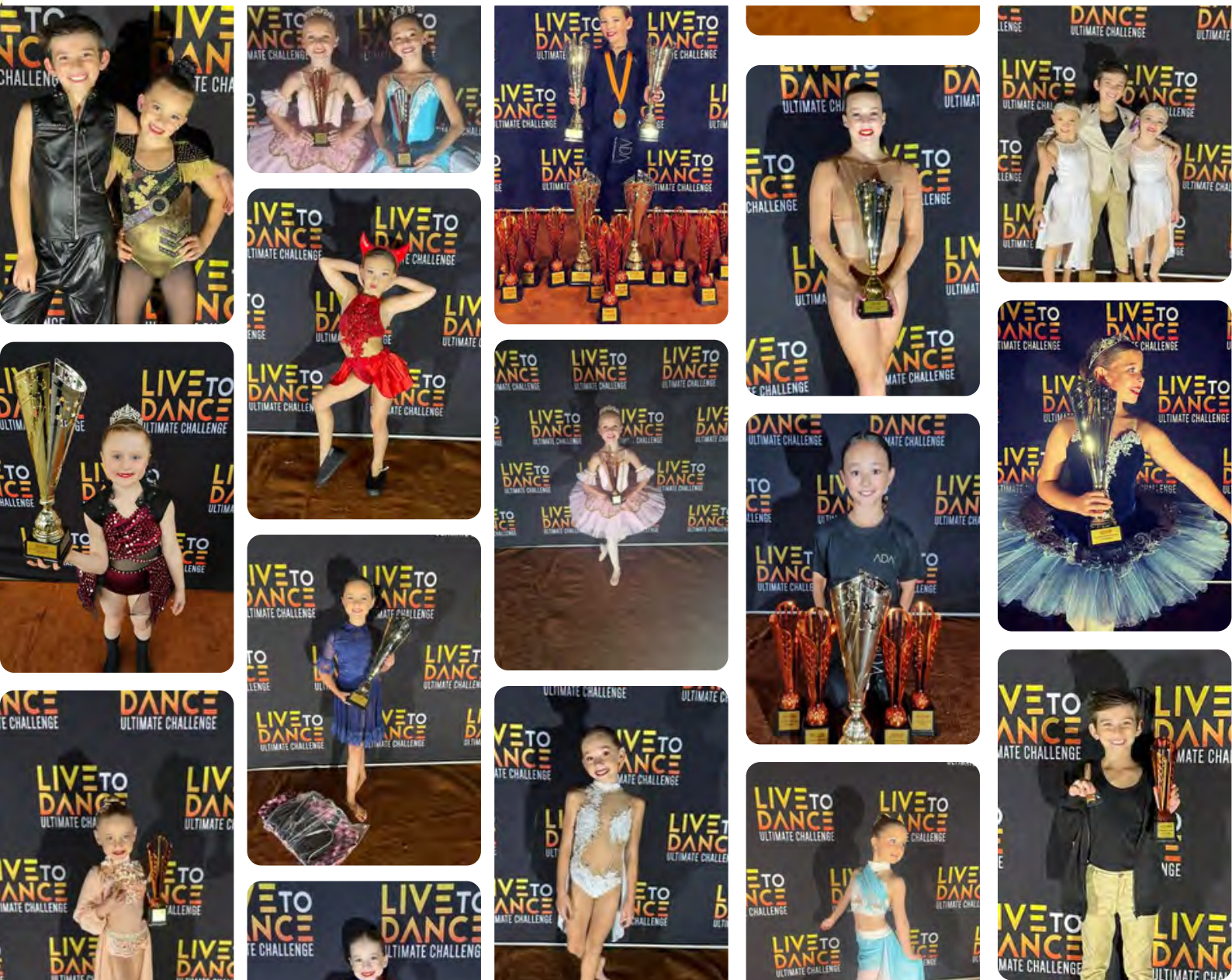
Trophies and prizes awarded to all competitors in the inclusive section. **This section is free to enter.**

DUOS/TRIOS - ANY STYLE Multiple entries accepted

6/u	8/u	10/u	12/u	14/u	15/o
-----	-----	------	------	------	------

Age is calculated from eldest competitor within the duo or trio, please refer to rules and conditions of entry

LIVE TO DANCE ULTIMATE CHALLENGE RESERVES THE RIGHT TO COMBINE SECTIONS IF DEEMED NECESSARY.



EMAIL ENTRY FORM ENTRANT INFORMATION

ONLY COMPLETE THIS FORM IF ENTERING VIA EMAIL. THIS FORM IS NOT REQUIRED IF ENTERING ONLINE. EMAIL COMPLETED ENTRY FORM TOLTDCENTRIES@GMAIL.COM PRIOR TO THE CLOSING DATE. A NEW ENTRY FORM IS REQUIRED FOR EACH EVENT.

Full Name : Event:

Date of Birth : Age : Email :

Studio: Phone:

Duo•Trio competitors

Category	Age Division	SR/R/OP	Track Length	Fee
			PROGRAM	\$7
		THANK YOU FOR YOUR REGISTRATION	TOTAL	

Please use the below information for bank transfer. Use your competitors last name and initial as your reference.

BSB: 633 000 / ACC: 143555837